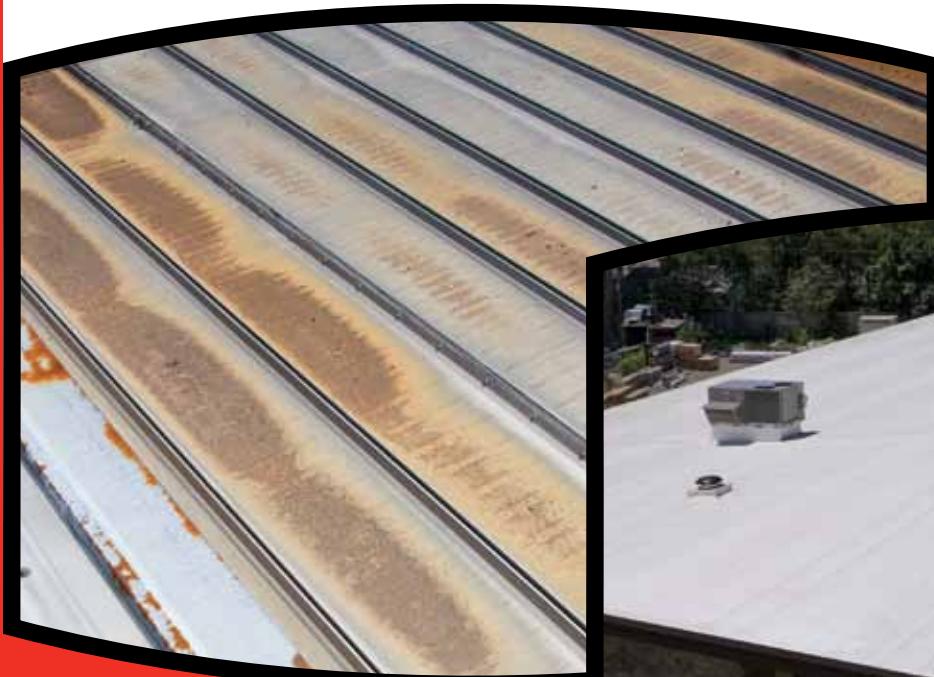


# Firestone Single-Ply Retrofit Solutions for Metal Roofs



**BEFORE**

## THE PROBLEM

Over time, metal roofing systems can rust, corrode and develop leaks around joints and fasteners. These issues can develop from poor installation or normal weathering. Many times, leaky metal roofs are patched with caulk, tape or coating—however, these are often only short-term fixes.



**AFTER**

## THE SOLUTION

Firestone single-ply retrofit solutions offer a wide range of roofing materials and attachment methods that can be installed directly over worn metal roofs. These solutions extend the life of the existing roof up to 20 years. They also provide the opportunity to install insulation which can improve the overall energy efficiency of the building.

**Firestone**  
BUILDING PRODUCTS  
**NOBODY COVERS YOU BETTER.™**

# One Solution—Many Options

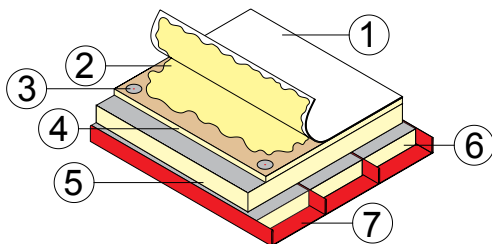
Firestone Building Products is your single source for metal retrofit roofing solutions. From insulation to coverboard to membrane, Firestone manufactures the products you need for consistent, reliable results.

Metal retrofit is a cost-effective solution and provides many benefits, including:

- Existing deck is reused, eliminating expensive tear-off
- Highly-reflective membrane options include EcoWhite™ EPDM and UltraPly™ TPO
- Improved energy efficiency through the addition of insulation
- Installed by licensed Firestone contractors
- Red Shield® Warranty protection

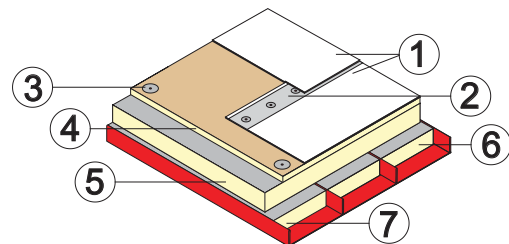
One of the biggest advantages of Firestone single-ply retrofit solutions is the broad selection of Firestone products and installation methods available. These options allow you to choose the system that works best with your structure, budget and environment.

## Fully Adhered Systems



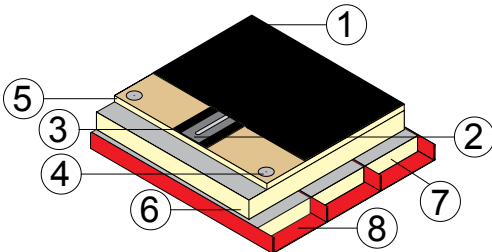
- |   |                             |
|---|-----------------------------|
| 1) RubberGard™ EPDM, EcoWhite EPDM or UltraPly TPO membrane | 4) ISOGARD™ HD cover board  |
| 2) Bonding adhesive   | 5) ISO 95+™ GL insulation   |
| 3) Fastener and plate                                       | 6) Insulation fill material |
|   | 7) Existing metal roof deck |

## Mechanically Attached Systems



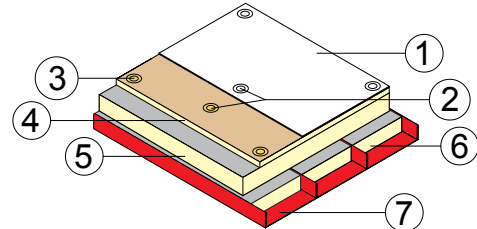
- |   |                             |
|---|-----------------------------|
| 1) RubberGard EPDM or UltraPly TPO membrane   | 4) ISOGARD HD cover board   |
| 2) Seam plates and fasteners or batten strips | 5) ISO 95+ GL insulation    |
| 3) Fastener and plate                         | 6) Insulation fill material |
|   | 7) Existing metal roof deck |

## RubberGard R.M.A. System



- |   |                             |
|---|-----------------------------|
| 1) RubberGard EPDM membrane                   | 5) ISOGARD HD cover board   |
| 2) Seam plates and fasteners or batten strips | 6) ISO 95+ GL insulation    |
| 3) QuickSeam™ R.M.A. strip                    | 7) Insulation fill material |
| 4) Fastener and plate                         | 8) Existing metal roof deck |

## InvisiWeld™ System



- |   |                             |
|---|-----------------------------|
| 1) UltraPly TPO membrane  | 4) ISOGARD HD cover board   |
| 2) InvisiWeld plates — fastened into the roof purlins and adhered to the underside of the roof membrane | 5) ISO 95+ GL Insulation    |
| 3) Fastener and plate   | 6) Insulation fill material |
|   | 7) Existing metal roof deck |

**Firestone Building Products**  
 250 West 96th St., Indianapolis, IN 46260  
 Corporate Office: 1-800-428-4442 • 317-575-7000  
[www.firestonebpco.com](http://www.firestonebpco.com)

### International Offices:

Firestone Building Products Canada  
 2835 Argenta Rd., Unit #2  
 Mississauga, ON L5N 8G6  
 1-888-292-6265 • Fax: 877-666-3022

Firestone Building Products Europe  
 Ikaroslaan 75 - 1930 Zaventem, Brussels, Belgium  
 +32 2 7114450 • Fax: +32 2 7212718

Firestone Building Products Latin America  
 8200 NW 52nd Terrace, Suite #107  
 Miami, FL 33166  
 305-471-0117 • Fax: 305-471-0377

